



Axstor Ai-1000 Hardware iSCSI RAID with blistering performance

Unit 4 Richardson Way
Crosspoint Business Park
Coventry
CV2 2TY

T: +4 (0) 870 33 00 77 0
E: sales@axstor.com

F: +4 (0) 870 33 00 77 1
W: www.axstor.com



Product Description

The Axstor Ai Series iSCSI Ai-1000 offers scalable solutions designed to meet the growing storage needs of SMBs,

The Axstor Ai iSCSI Array Servers deliver scalable, high performance, reliable storage solutions that are easy to install and manage.

The Axstor Ai iSCSI Array Servers can handle both file and block based data, providing support for applications like MS Exchange, SQL servers such as Oracle and MS SQL in both windows and Unix/Linux environments.

The Axstor Ai Series is available in a number of configurations to best suit your applications and needs. 4 iSCSI Host Channels and up to 8 SATA II drives, in a Pedestal chassis.

Key Features

Performance

Transfer Rate	Up to 458MB/s
Cached IOPs	>40,000

Capacity

Max Drives	8
Max Drive Size	1TB
Max Capacity	8TB

iSCSI

Max Ports	4
Max Speed	4Gb/s full offload
VLAN	Up to 8 VLANS
QOS	Yes
Jumbo Frames	Yes

Volume Virtualisation

RAID Levels	JBOD, Striped, Mirrored, Striped Mirrors and Parity
Dynamic Expansion	Yes
Max Volumes	1024 (256 per initiator)
Max Target Nodes	1024
Cache	Up to 4GB
Background Rebuild	Yes
Rebuild	Yes
Prioritisation	Yes
Battery Backup	Yes

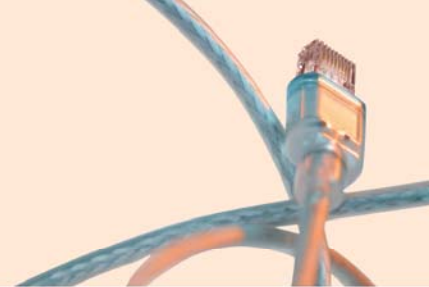
Management

Embedded HTTPS	Yes
----------------	-----

Axstor AI iSCSI Ai-1000

Hardware iSCSI RAID

with blistering performance



Feature	Description
Enclosure	Pedestal
Max Drives	8
Max iSCSI Channel	4 x 1GbE
Max Capacity	8TB
Transfer Rate	458MB/s
Power supply	460w

GENERAL

- iSNP ASIC: iSCSI/TCP/IP full offload, SCSI3, cache management, volume virtualization, and Serial ATA
- Management Processor: XPC8241 Motorola PowerPC®
- Cache Memory: ECC, 1 GB (Battery protected)
- System Memory: ECC, 512 MB
- Flash: 64 MB
- Authentication and iSNS for discovery
- iSCSI/TCP/IP full hardware offload
- Supports standard Ethernet switching fabric
- Jumbo Frames support
- Transfer rate: Up to 220 MB/s full duplex per port
- iSCSI digest (CRC) supported on header and data

VOLUME VIRTUALISATION FEATURE

- JBOD, Striped sets, Mirrored sets, Striped Mirrored sets, and Parity sets
- 1024 Virtual Volumes (256 accessible per initiator)
- 1024 Target Nodes
- MC/S multiple connections/session
- iSCSI error recovery levels 0
- RAID level migration
- Free space defragmentation
- Online capacity expansion
- Write-through, write-back, write-coalescing, and read-ahead
- Battery-backed cache
- Automatic detection of failed drives
- Automatic rebuild of spare drive
- Hot-swapping of drives
- Drive roaming during power off
- Micro rebuilds
- Instant volume accessibility
- LAG (IEEE 802.3ad Link Aggregation Group) Support for up to eight LAGs
- VLAN (IEEE 802.1Q Tag) Support
- One to one mapping between IP Subnet and VLAN
- Multiple VLANs per physical port with VLAN tag
- All physical ports in an LAG belong to the same VLAN
- QoS Support
- Egress packet prioritization based on IETF
- DiffServ and IEEE 802.1P tag1024 Connections
- TCP/IP Support
- RFC 1122 compliant
- TCP: Congestion management and flow control based on RFC 2581; Options: Maximum Segment Size (MS); Round Trip Time Measurement (RTTM); Window Scale
- IP: Path MTU Discovery and IP Reassembly

ISCSI NETWORK INTERFACE

- RFC Standard Track (RFC3720,RFC3721,RFC3723,
- RFC3783 and RFC3347) including features of CHAP

STORAGE NETWORK MANAGEMENT

- IP-SAN Device Manager (IDM) Create, manage, expand, and monitor programs Error statistics and performance information
- Embedded HTTPS server supporting
- CIM/SMIS standard
- Event Manager to view and persist events
- Firmware field upgradeable